

Government



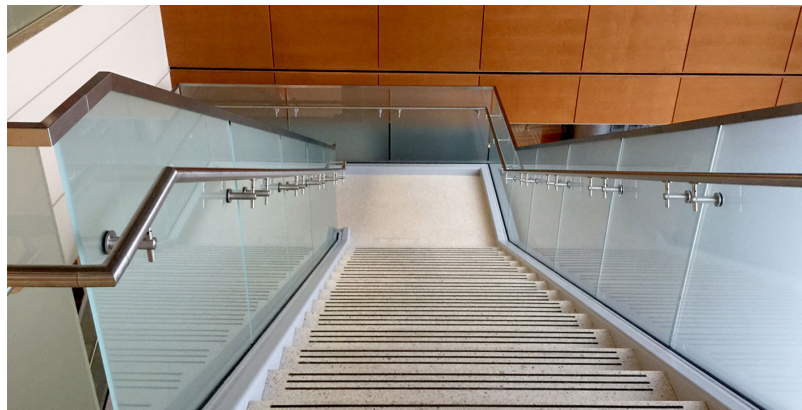
Project: NASA Marshall Space Flight Center
Architect: Thomas, Miller & Partners
Completion: April 2014

Location: Huntsville, AL
Contractor: B.L. Harbert Int'l

Scope: This project called for more than 750 linear feet of our Track Rail shoe-mounted, structural glass railing, utilizing an optional frosted glass finish. The beautiful stair design forged an opportunity for our railing to become a stunning focal point. We were later called upon to provide a stainless steel top cap for the entire railing system.



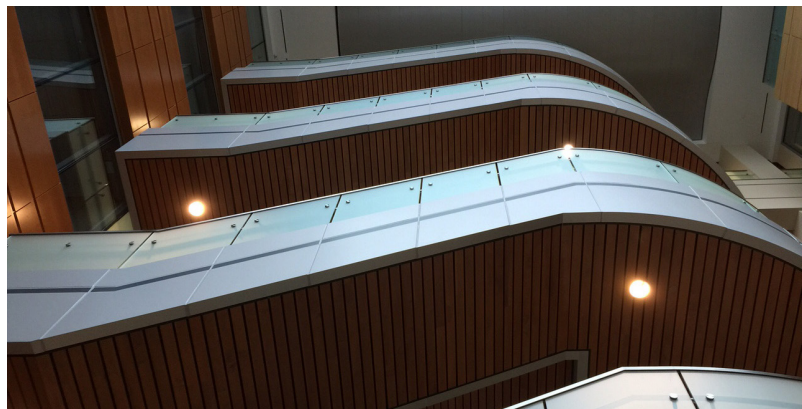
Optional frosted glass offers privacy for pedestrians.



The addition of a stainless top cap added glass edge protection and rigidity.



Stainless steel handrails were applied along stairs and landings.



Expansive runs of frosted glass foster beautiful flowing lines, creating a veritable architectural sculpture

We **elevate places** where experiences happen by providing **innovative** engineering, fabrication, and installation solutions to the **most complex challenges**. Discover our **unconventional** approach.