

Entertainment District

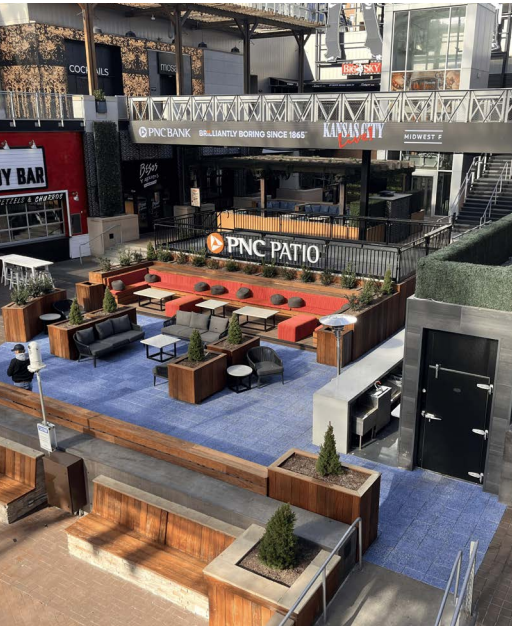
Project: KC Power & Light District

Location: Kansas City, MO

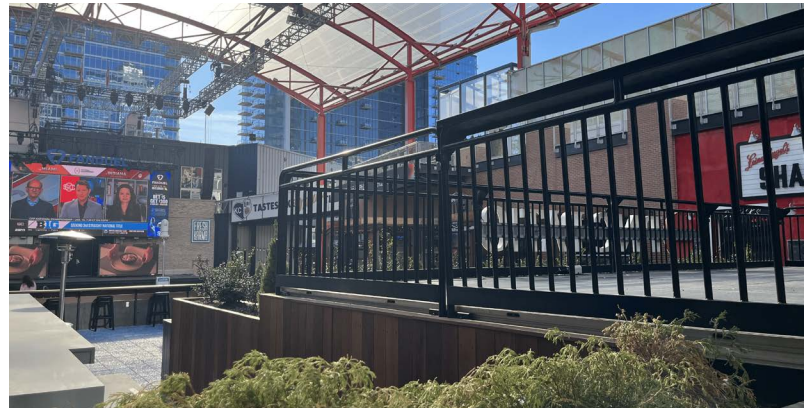
Completion: April 2026

Scope:

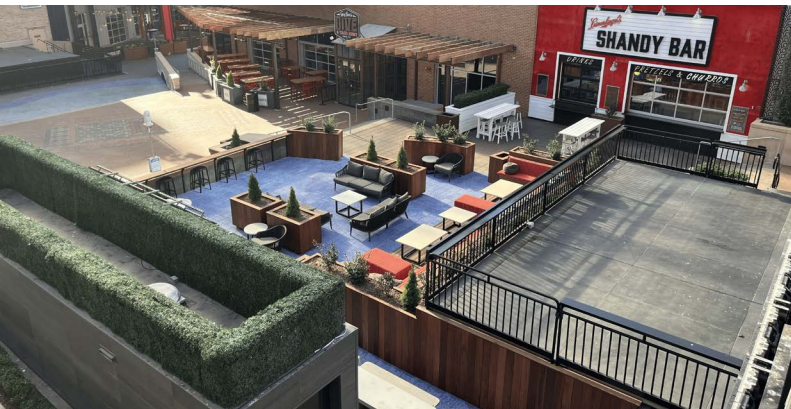
Located in the heart of downtown Kansas City, the KC Power & Light District spans nine city blocks and serves as a dynamic hub for dining and entertainment, including the popular Kansas City Live! event space. Since opening in 2008, the district has welcomed more than 95 million visitors and played a key role in revitalizing downtown Kansas City, hosting everything from concerts and sports watch parties to annual festivals. Within the district, the PNC Patio serves as a versatile event space with a range of seating options for both general visitors and VIP guests. To support this level of activity, Sightline Commercial Solutions enhanced the VIP stage area with a custom platform and railing system, including integrated platforms, IBC and SC90 guardrails, and drink rails. The result is an elevated, secure, and functional area that improves sightlines and guest comfort during performances and events. Designed for flexibility, these modular railing and seating solutions support a wide range of events, from everyday social gatherings to high-energy experiences like concerts and Royals and Chiefs watch parties, while maintaining safety and comfort in a lively environment and helping the space adapt to the evolving demands of a high-traffic entertainment destination.



The PNC Patio serves as a versatile event space with a range of seating options for both general visitors and VIP guests.



Sightline enhanced the VIP stage area with a custom platform and railing system, including integrated platforms, IBC and SC90 guardrails, and drink rails.



The result is an elevated, secure, and functional area that improves sightlines and guest comfort during performances and events.



Designed for flexibility, these modular railing and seating solutions support a wide range of events.

We **elevate** places where experiences happen by providing **innovative** engineering, fabrication, and installation solutions to the **most complex** challenges. Discover our **unconventional** approach.