

Lowe's Headquarters

Office

Project: Lowe's Headquarters
Architect: Studio Fusion
Completion: January 2009

Location: Mooresville, NC
Contractor: RodgersDooley

Scope:

At the heart of Mooresville, North Carolina, the Lowe's Corporate Headquarters reflects the company's commitment to innovation, wellness, and collaborative design. From its tranquil Zen garden to the inviting "Living Room" gathering space, the facility is designed to foster creativity and community. To support this vision, Sightline Commercial Solutions engineered and fabricated custom glass railing systems throughout the campus, delivering both functionality and architectural sophistication. One of the project's centerpieces is the monumental seven-story staircase, a striking vertical connection within the headquarters. Sightline provided stainless steel commercial railings paired with custom-tempered glass in Lowe's signature blue, reinforcing brand identity while creating a dramatic, light-filled focal point. Additional railing systems were installed across various interior and exterior locations, blending durability with a clean, modern aesthetic. By combining technical precision with design sensitivity, Sightline helped transform the headquarters into a dynamic, people-centered workplace.



Southpark stainless and glass railing is fascia-mounted with custom, extended height brackets.



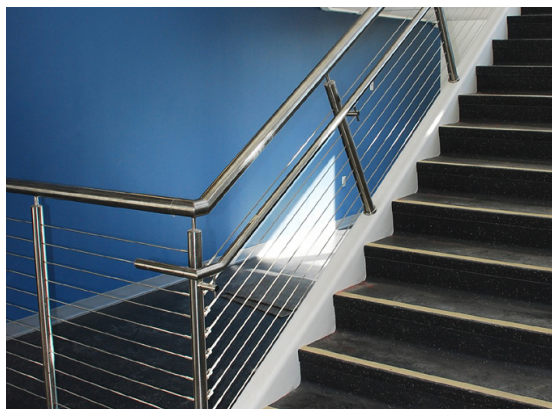
The grand stair is encapsulated by windows, drenched in natural light.



Optional colored glass panels create a truly unique railing system.



All exterior Casino™ railing is fabricated with grade-316 stainless steel.



Interior/exterior stairwells host grade-304 stainless Casino railing.



Free-standing stainless steel handrails protect and guide pedestrians.

We elevate places where experiences happen by providing innovative engineering, fabrication, and installation solutions to the most complex challenges. Discover our unconventional approach.