

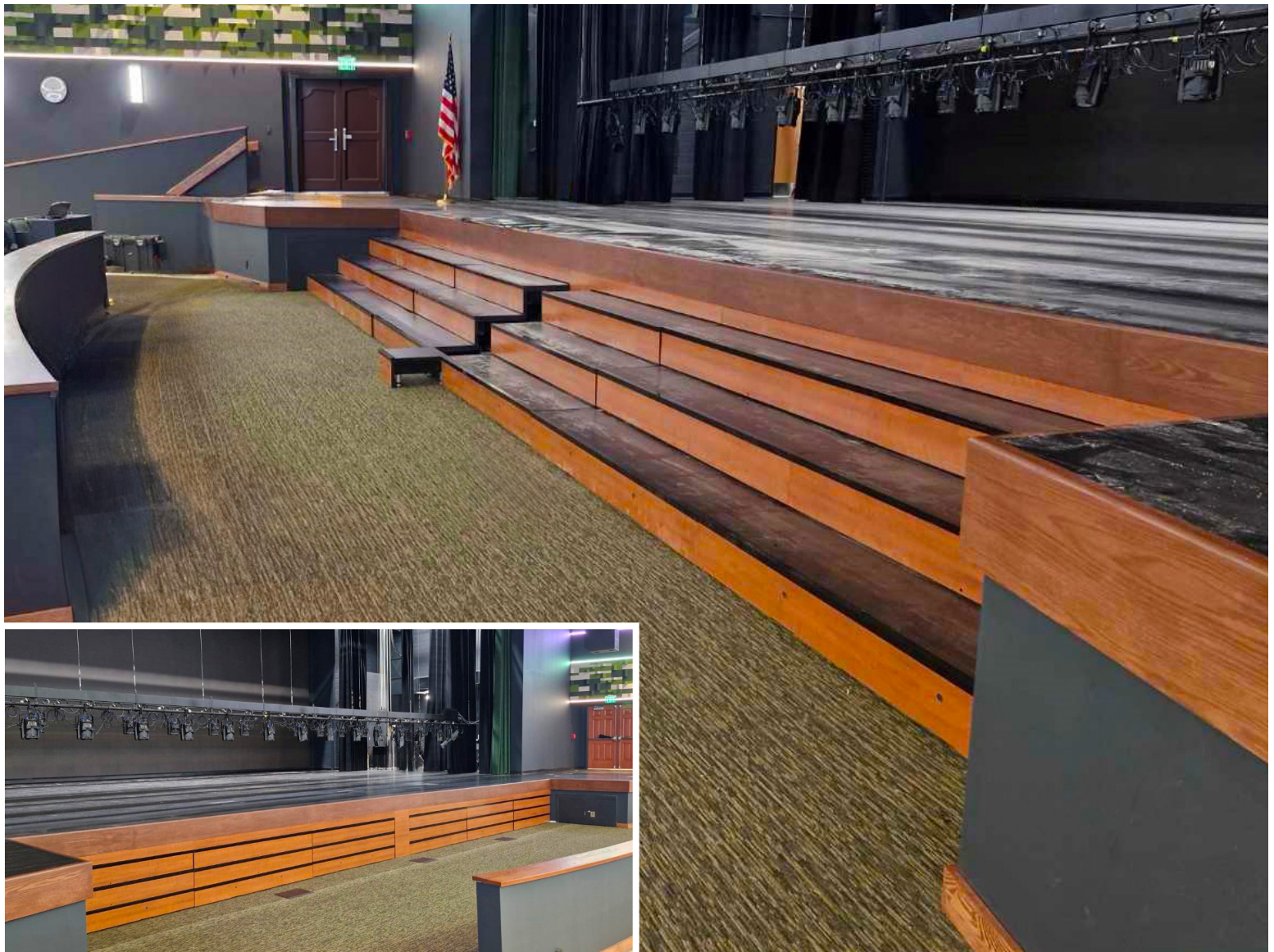
# Retractable Seating Riser

## Choral Riser - Seating Riser - Staircase



Designed with robust functionality and aesthetic adaptability in mind, the Retractable Riser features a durable aluminum frame, high-capacity heavy-duty casters for smooth mobility, and precision-crafted wood treads and risers. A variety of finish options are available to ensure the unit complements the architectural and design characteristics of any facility.

Versatile in application, the Sightline Retractable Riser is ideal for use as a choral platform, stairway assembly, or traditional audience seating riser. Its modular design allows for full customization to meet the specific spatial and functional needs of theaters, auditoriums, multipurpose rooms, and event venues of all sizes.



# Retractable Seating Riser

Choral Riser, Seating Riser, Staircase

