

# Charlotte-Douglas Int'l Airport

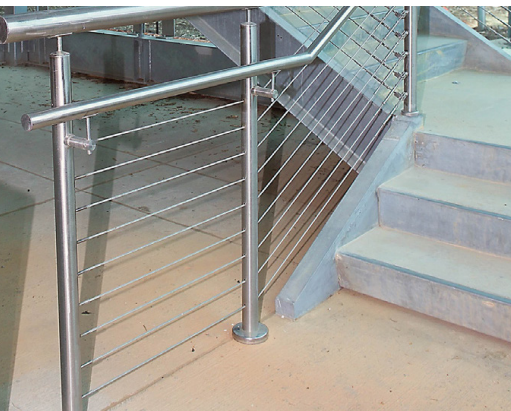
## Aviation & Transportation

**Project:** CDIA West  
**Architect:** LS3P | The Wilson Group  
**Completion:** June 2005

**Location:** Clayton, NC  
**Contractor:** Turner Construction

### Scope:

Global healthcare company Grifols Therapeutics had outgrown its existing office space, and sought to consolidate all of its office workers into one facility. The resulting 115,000-square-foot building provided the healthcare giant with much-needed space, while also serving as a showpiece entrance to the company's Clayton, NC, campus. The facility's sleek architecture merges seamlessly with the surrounding natural beauty. With its stainless steel cables, Sightline Commercial Solution's Casino Rail provides a clean, modern aesthetic that pairs well with the company's focus on healthcare research and biotechnology. A three story staircase with post mounted handrails allows office personnel to travel through the building with railings that are safe and secure.



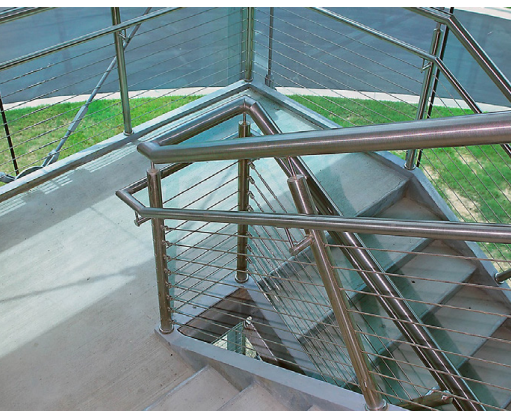
Level railings are top-mounted by way of embedding posts into the concrete floor.



Corners are single-posted with cables terminating on either side of the post.



Each stair application features a 1.5" postmounted, continuous welded handrail.



A 2.5" continuous welded top cap is mounted via stem-and-saddle assembly inserted into the top of the post.



Double posts at termination on landings allow for extension and return of the continuous welded top cap and handrail.



In areas where traffic/pedestrian separation is required, the stainless cables terminate directly into the concrete barriers.

We **elevate places** where experiences happen by providing **innovative** engineering, fabrication, and installation solutions to the **most complex challenges**. Discover our **unconventional** approach.