

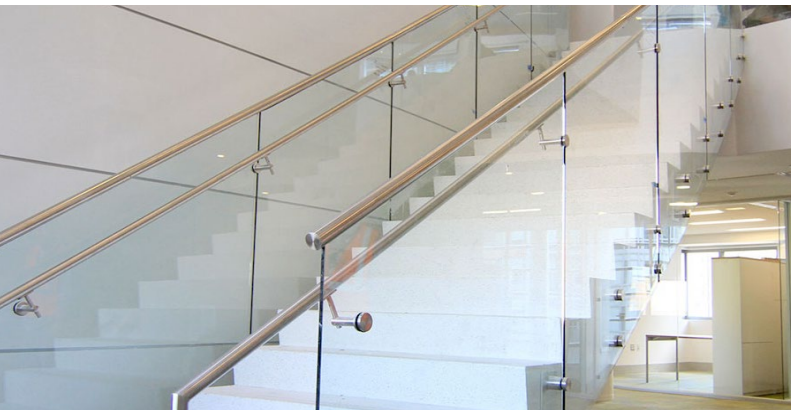


Project: United Therapeutics
Architect: Ewing Cole
Completion: June 2012

Location: Silver Spring, MD
Contractor: DPR Construction

Scope:

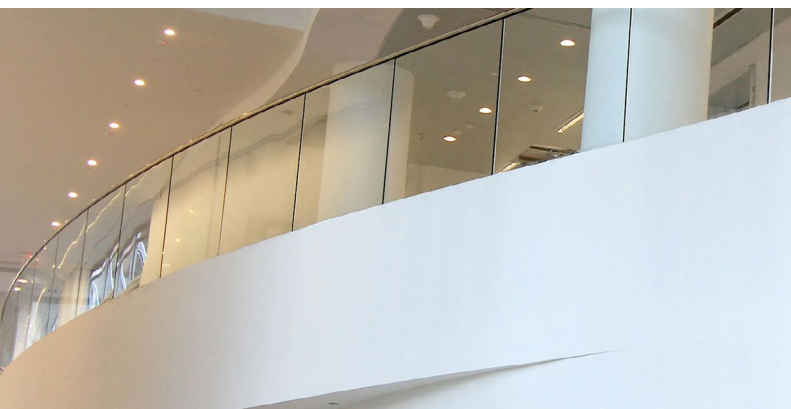
Sightline Commercial Solutions was selected to provide premium railing systems for a cutting-edge facility owned by United Therapeutics, a biotechnology company known for innovation and forward-thinking design. The project called for more than 900 linear feet of high-performance glass railing solutions that would align with the building's modern aesthetic while delivering exceptional safety, durability, and visual transparency. To meet these objectives, Sightline supplied and installed our Point Series glass railing system on the facility's main staircases. This system features a minimalist, node-supported design that secures glass panels with precision-engineered stainless steel fittings, eliminating the need for bulky framing or posts. The result is a clean, open appearance that enhances natural light flow and creates unobstructed sightlines throughout the interior. To complement the system and meet safety standards, each stair railing was finished with a stainless steel handrail, adding both a tactile and visual layer of refinement.



Staircases called for Point Series stainless steel node supported railing.



Glass-mounted stainless steel handrails were utilized on staircases.



Our Track Rail shoe supported glass railing system was utilized on overlooks with stainless steel top cap.



Point series stair railing and Track Rail guardrails create a beautifully cohesive and clean design aesthetic.

We **elevate places** where experiences happen by providing **innovative** engineering, fabrication, and installation solutions to the **most complex challenges**. Discover our **unconventional** approach.