

**PROJECT INFORMATION**

PROJECT:  
OCULA FRAMELESS WINDSCREEN SALES DRAWING  
LOCATION:  
MINNEAPOLIS, MN

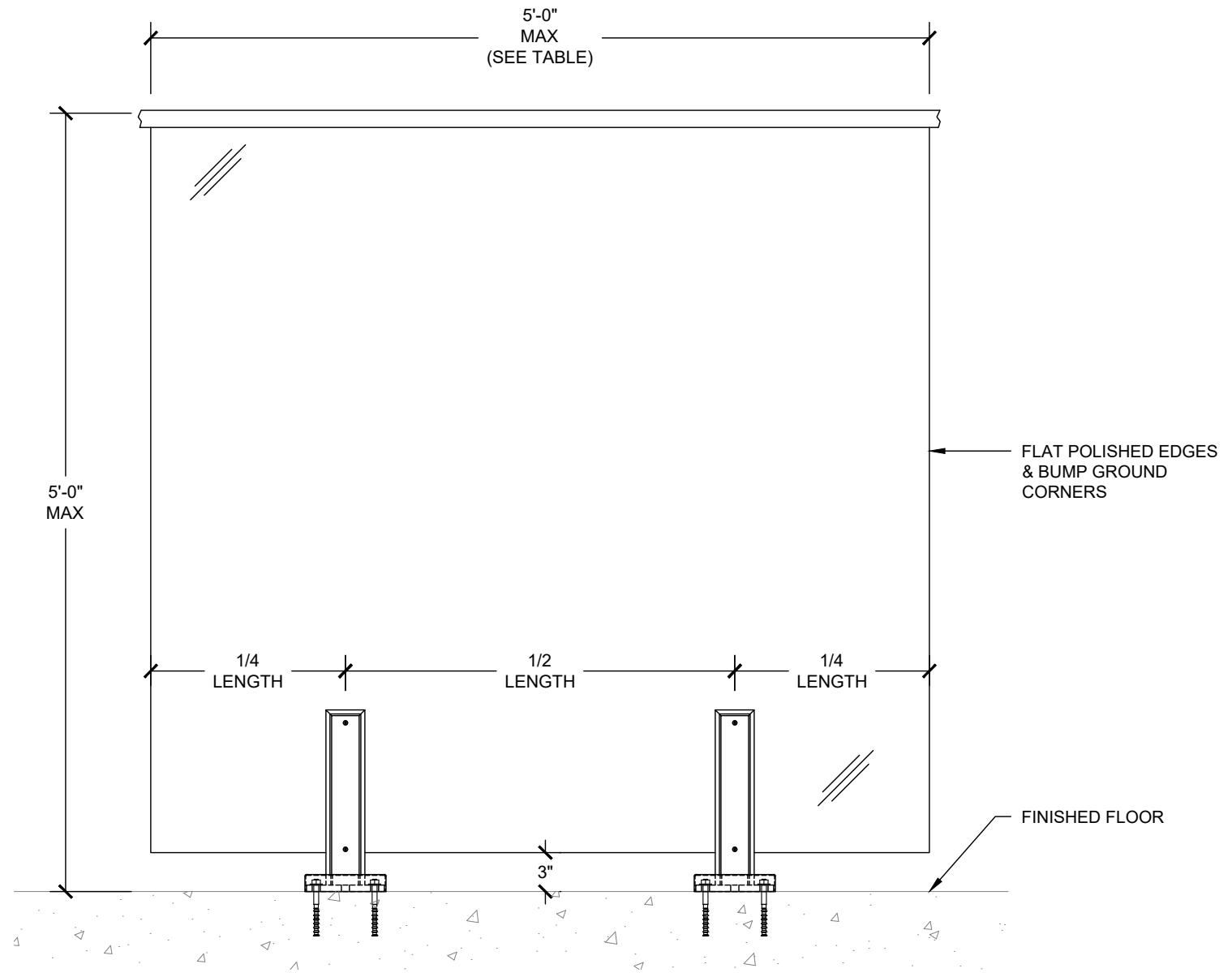
**OCULA FRAMELESS WINDSCREEN  
(2) SUPPORT SYSTEM - BASEPLATE MOUNT DETAILS**

GLASS SIZE <sup>1</sup> (W X H)	SUPPORTS (#)	MAX WIND LOAD <sup>2</sup> (PSF)
48 X 43	2	86
48 X 48 <sup>3</sup>	2	54
48 X 60 <sup>3</sup>	2	33
60 X 60 <sup>3</sup>	2	28

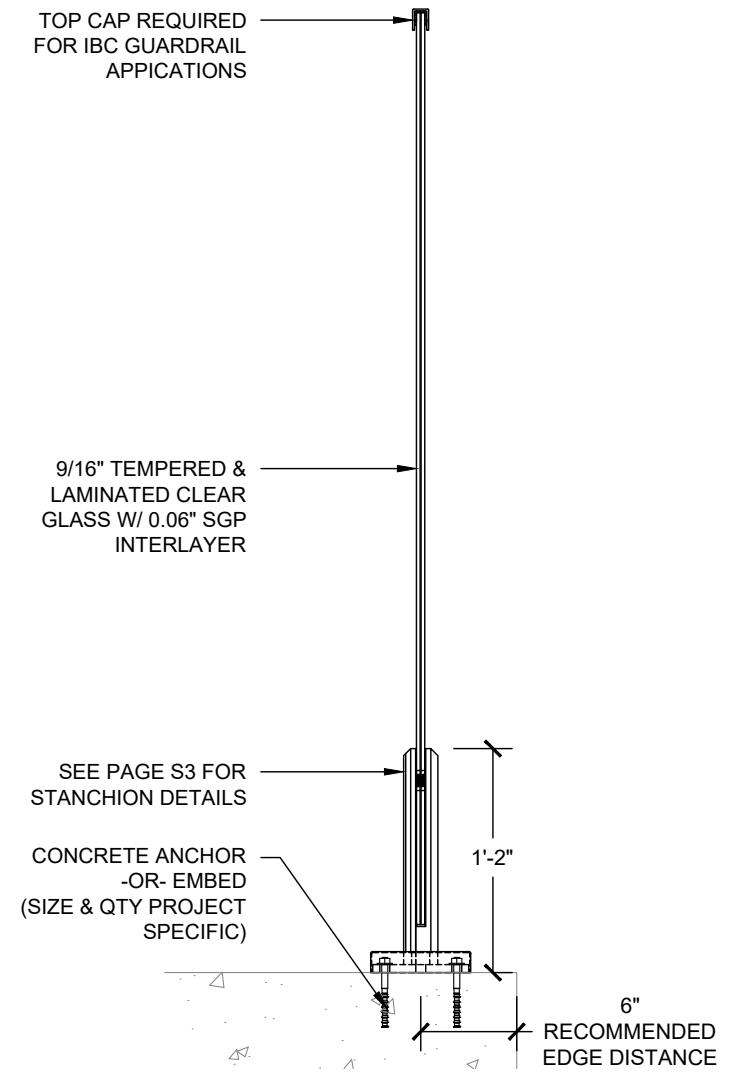
1 - GLASS PANEL HEIGHT LISTED IS RAIL HEIGHT FROM F.F.  
2 - MAX WIND LOAD IS BASED ON RAIL ONLY (SUPPORTS & GLASS). ANCHORAGE TO BUILDING STRUCTURE MAY REDUCE LOADING FURTHER. SEE SIGHTLINE COMMERCIAL SOLUTIONS' ENGINEERING FOR FURTHER DETAILS. SERVICE LEVEL (ASD) LOADS.  
3 - CONFIGURATION NOT APPLICABLE AS A GUARDRAIL, BARRIER ONLY.



**C**  
**S1** FRAMELESS WINDSCREEN (BASEPLATE) - PLAN VIEW  
SCALE: 1"=1'-0"



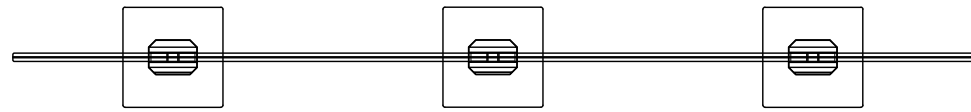
**A**  
**S1** FRAMELESS WINDSCREEN (BASEPLATE) - ELEVATION VIEW  
SCALE: 1"=1'-0"



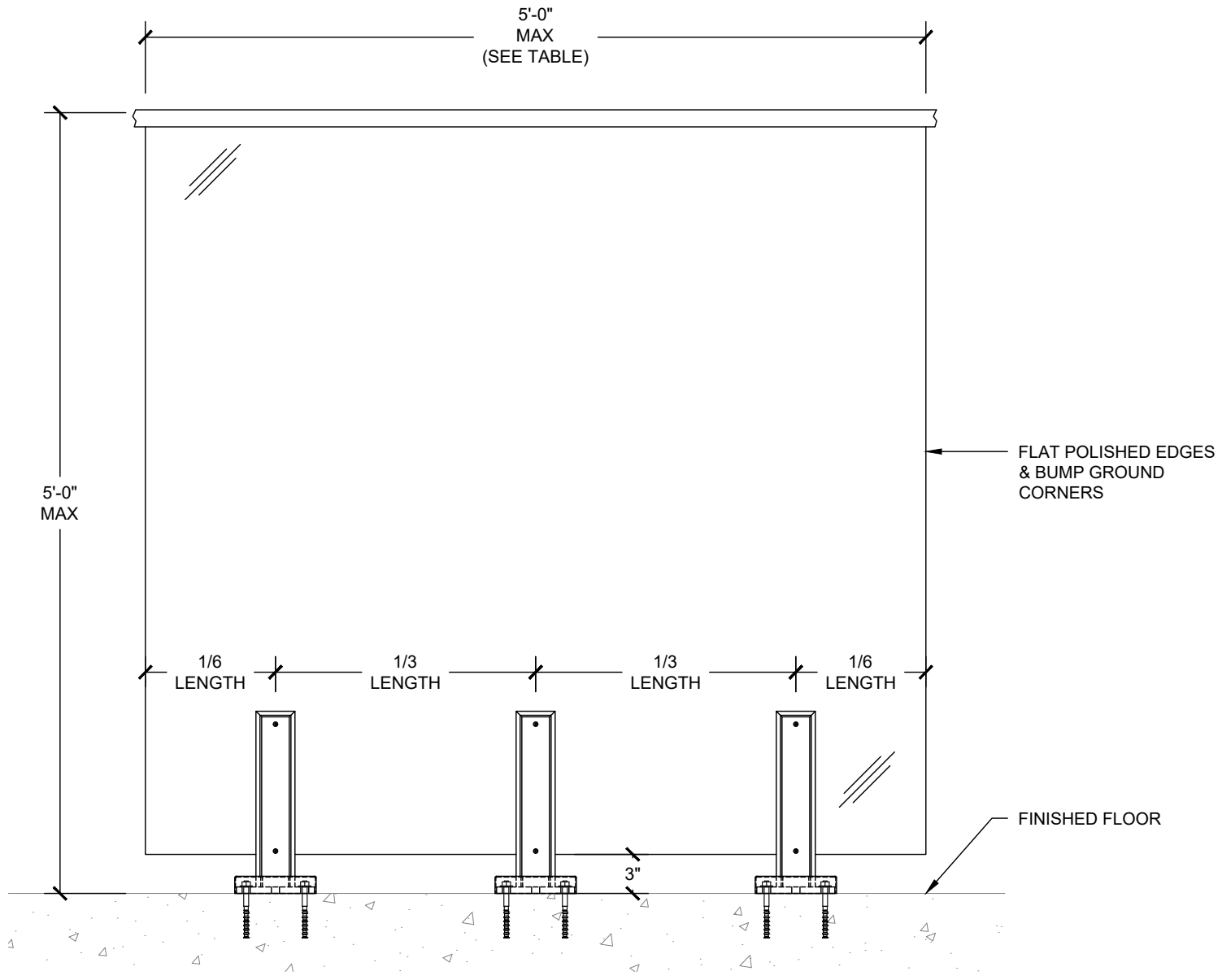
**B**  
**S1** FRAMELESS WINDSCREEN (BASEPLATE) - SECTION VIEW  
SCALE: 1"=1'-0"

ITEM	DESCRIPTION	AUTH	DATE

DRAWN BY NBB	DATE 3/27/20
PROJECT NUMBER SALES	
SHEET NUMBER SCS-FRAMELESS-WS-S1	



**C** FRAMELESS WINDSCREEN (BASEPLATE) - PLAN VIEW  
**S2** SCALE: 1"=1'-0"

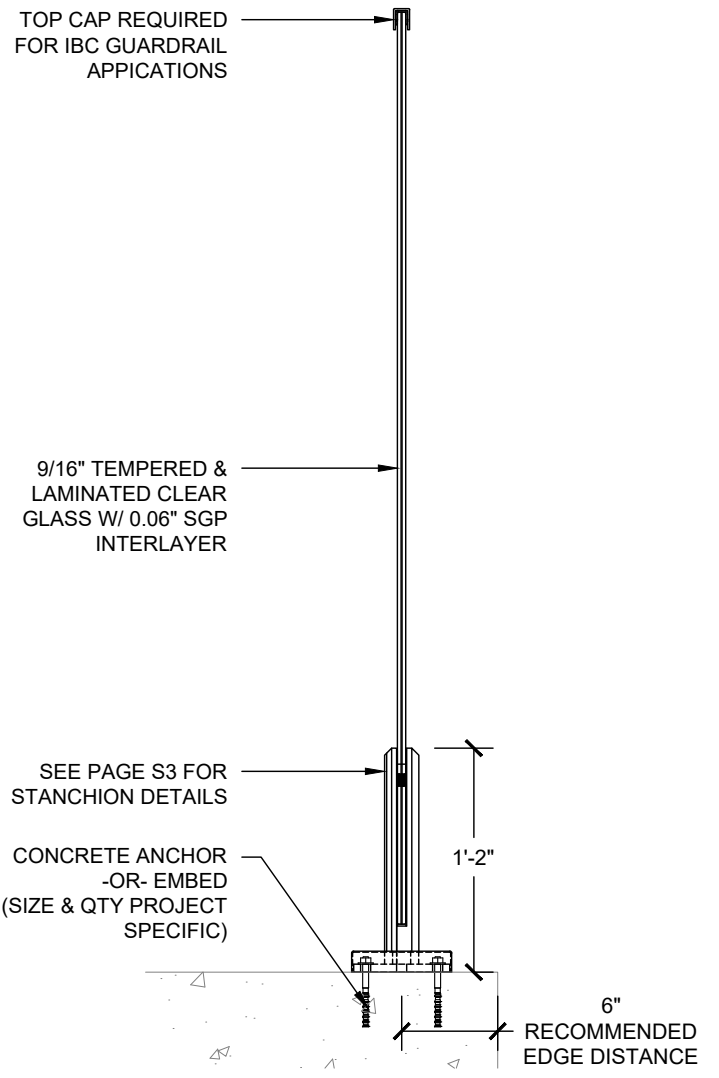


**A** FRAMELESS WINDSCREEN (BASEPLATE) - ELEVATION VIEW  
**S2** SCALE: 1"=1'-0"

**TABLE 2 - MAX WIND LOAD FOR STANDARD GLASS PANEL SIZES**

GLASS SIZE <sup>1</sup> (W X H)	SUPPORTS (#)	MAX WIND LOAD <sup>2</sup> (PSF)
48 X 43	3	86
48 X 48	3	66
48 X 60 <sup>3</sup>	3	40
60 X 60 <sup>3</sup>	3	35

1 - GLASS PANEL HEIGHT LISTED IS RAIL HEIGHT FROM F.F.  
 2 - MAX WIND LOAD IS BASED ON RAIL ONLY (SUPPORTS & GLASS). ANCHORAGE TO BUILDING STRUCTURE MAY REDUCE LOADING FURTHER. SEE SIGHTLINE COMMERCIAL SOLUTIONS' ENGINEERING FOR FURTHER DETAILS. SERVICE LEVEL (ASD) LOADS.  
 3 - CONFIGURATION NOT APPLICABLE AS A GUARDRAIL, BARRIER ONLY.



**B** FRAMELESS WINDSCREEN (BASEPLATE) - SECTION VIEW  
**S2** SCALE: 1"=1'-0"



7008 NORTHLAND DR.  
 MINNEAPOLIS, MN 55428  
 PH: (763) 533-2094

THIS DRAWING IS THE PROPERTY OF SIGHTLINE COMMERCIAL SOLUTIONS, LLC. NEITHER THE DRAWING NOR ITEMS THEREON ARE TO BE REPRODUCED OR USED IN ANY MANNER NOT AUTHORIZED BY SIGHTLINE COMMERCIAL SOLUTIONS, LLC. IN WRITING.

**PROJECT INFORMATION**

PROJECT:  
 OCULA FRAMELESS WINDSCREEN SALES DRAWING  
 LOCATION:  
 MINNEAPOLIS, MN

**OCULA FRAMELESS WINDSCREEN  
 (3) SUPPORT SYSTEM - BASEPLATE MOUNT DETAILS**

DRAWN BY NBB	DATE 3/27/20
PROJECT NUMBER SALES	
SHEET NUMBER SCS-FRAMELESS-WS-S2	

ITEM	DESCRIPTION	AUTH	DATE

FINISH: BRUSHED



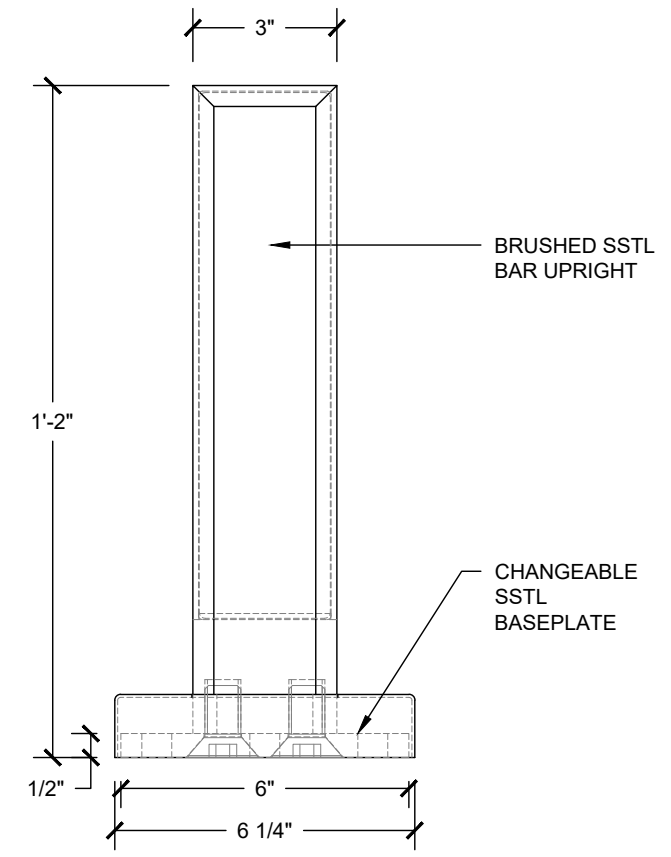
7008 NORTHLAND DR.  
MINNEAPOLIS, MN 55428  
PH: (763) 533-2094

THIS DRAWING IS THE PROPERTY OF SIGHTLINE COMMERCIAL SOLUTIONS, LLC. NEITHER THE DRAWING NOR ITEMS THEREON ARE TO BE REPRODUCED OR USED IN ANY MANNER NOT AUTHORIZED BY SIGHTLINE COMMERCIAL SOLUTIONS, LLC. IN WRITING.

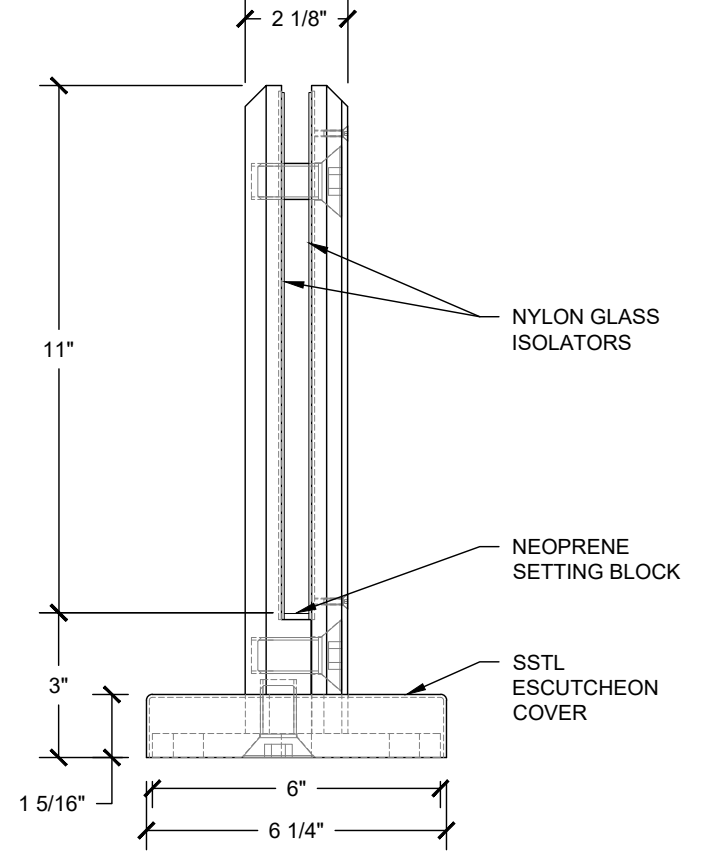
**PROJECT INFORMATION**

PROJECT:  
OCULA FRAMELESS WINDSCREEN  
SALES DRAWING  
LOCATION:  
MINNEAPOLIS, MN

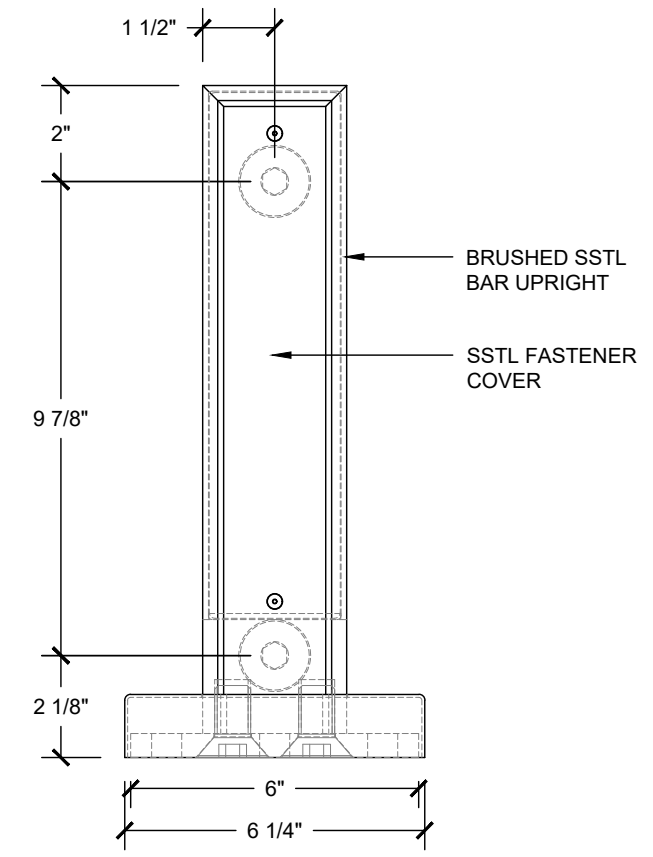
OCULA FRAMELESS WINDSCREEN  
STANCHION - BASEPLATE MOUNT DETAILS



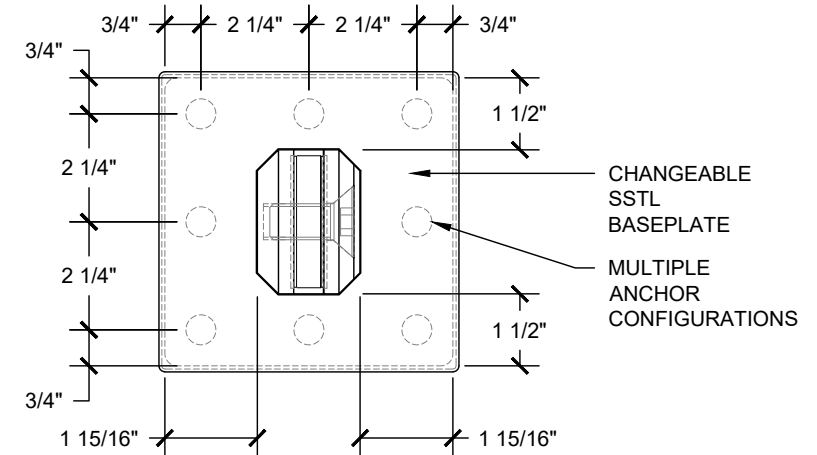
**A** STANCHION (BASEPLATE) - BACK VIEW  
SCALE: 3"=1'-0"



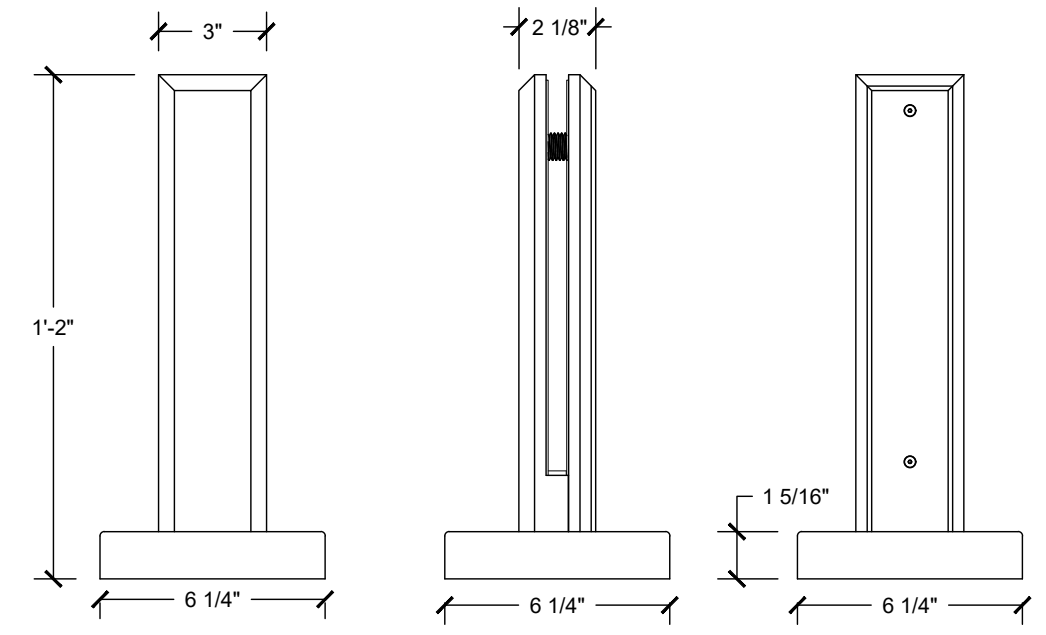
**B** STANCHION (BASEPLATE) - SIDE VIEW  
SCALE: 3"=1'-0"



**C** STANCHION (BASEPLATE) - FRONT VIEW  
SCALE: 3"=1'-0"



**D** STANCHION (BASEPLATE) - TOP VIEW  
SCALE: 3"=1'-0"



**E** STANCHION (BASEPLATE) - FINISHED VIEWS  
SCALE: NTS

ITEM	DESCRIPTION	AUTH	DATE

DRAWN BY NBB	DATE 3/27/20
PROJECT NUMBER SALES	
SHEET NUMBER SCS-FRAMELESS-WS-S3	