

Legacy Arena

Basketball Arena



Project: Legacy Arena
Architect: Populous
Completion: December 2021

Location: Birmingham, AL
Contractor: BL Harbert

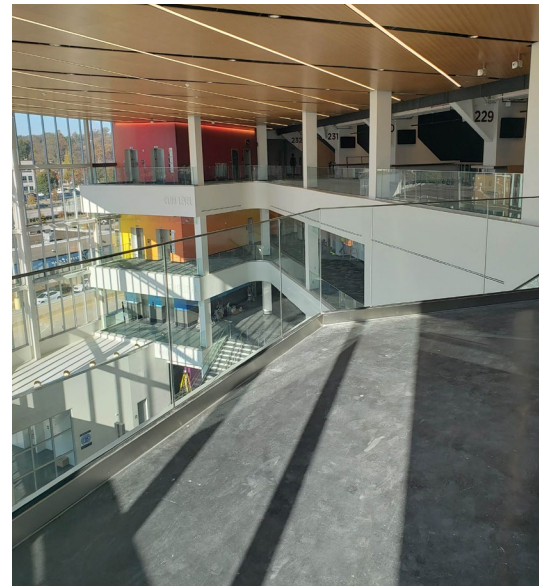
Scope: Part of the Birmingham Jefferson Convention Complex (BJCC), Legacy Arena—which originally opened in 1976 as BJCC Coliseum—has been a proud part of Birmingham’s entertainment scene for nearly 50 years. To turn the famed facility into a modern performance and sports venue, the BJCC funded an extensive reconstruction of the space, including a completely renovated entry lobby in the main concourse with new stairs and escalators, upgraded suites, and updated seating in the new South Bowl of the arena. Lining pedestrian passageways is more than 1,550 linear feet of Sightline Commercial Solutions’ custom-engineered railing, including glass guardrail and LED handrail. Sightline Commercial Solutions also designed a smoke baffle system for the facility to help prevent the spread of smoke along ceilings in the case of a fire emergency.



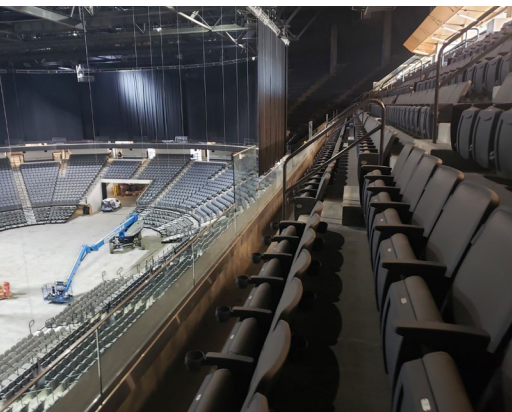
For improved crowd access, the renovated lobby boasts new elevators, escalators and monumental stairs lined with Sightline glass guardrail.



Glass guardrail is used throughout multiple levels of the new lobby, optimizing views of Birmingham and inviting light to flood the open reception area.



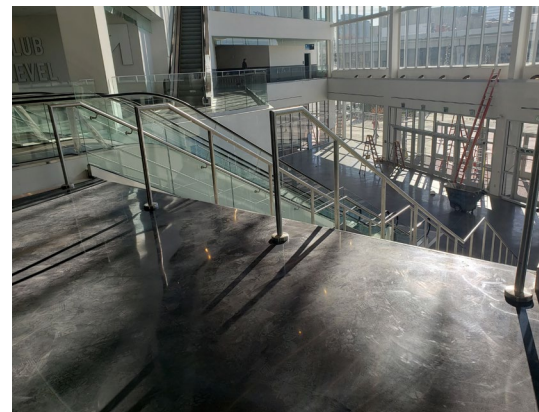
1/2" clear, tempered laminated glass with a PVB interlayer offers unobstructed views of the arena lobby.



Glass guardrail in the updated seating bowl provides an enhanced visitor experience.



350 LF of glass smoke baffle was installed at the suite and upper club level of the arena.



Stainless steel railing with LED pod lights lends safety while welcoming fans to the arena.

We elevate places where experiences happen by providing innovative engineering, fabrication, and installation solutions to the most complex challenges. Discover our unconventional approach.